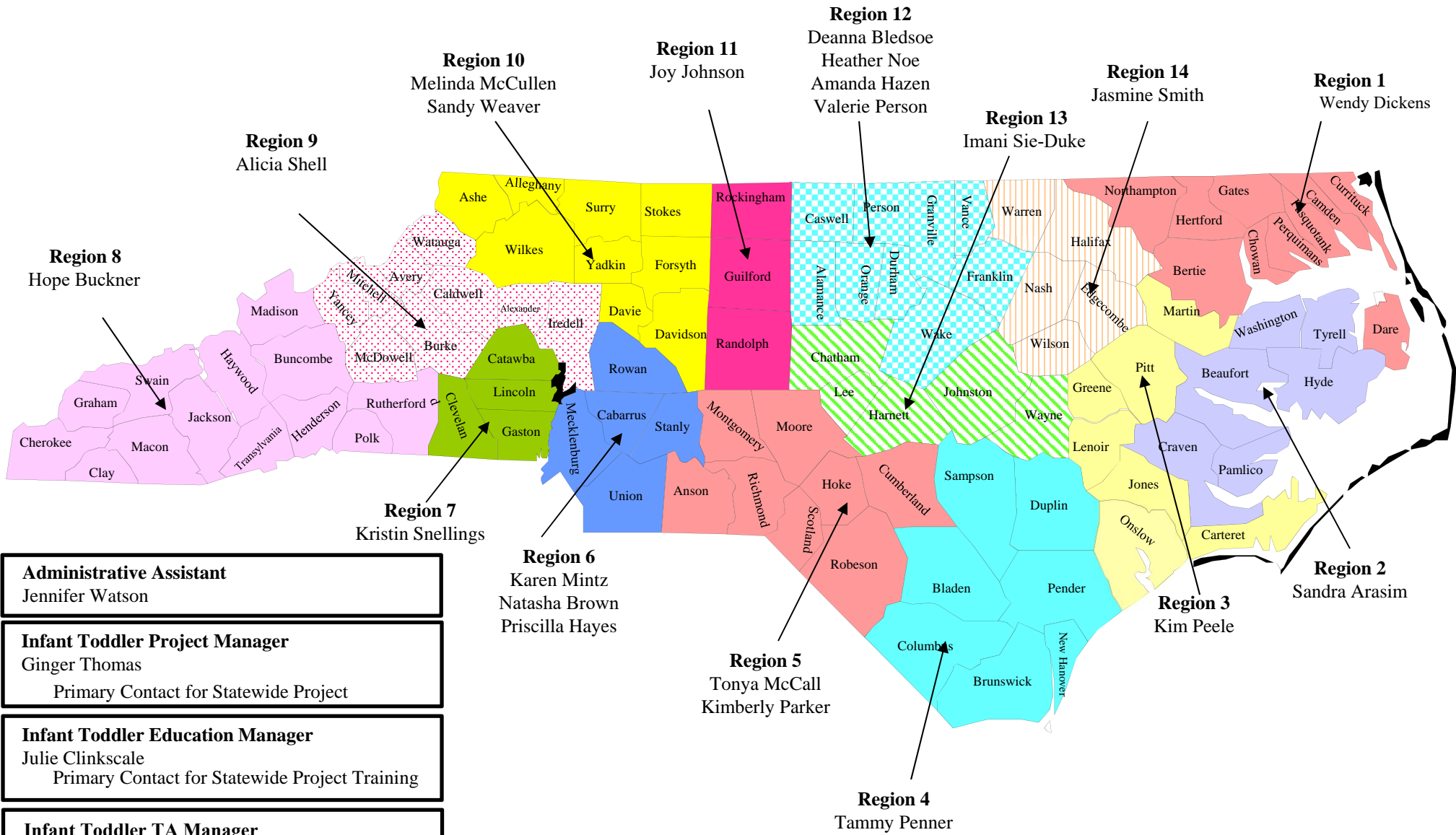


# NC Infant-Toddler Quality Enhancement Project



- Administrative Assistant**  
Jennifer Watson
- Infant Toddler Project Manager**  
Ginger Thomas  
Primary Contact for Statewide Project
- Infant Toddler Education Manager**  
Julie Clinkscale  
Primary Contact for Statewide Project Training
- Infant Toddler TA Manager**  
Robin Warfield
- Anchor Infant Toddler Specialist**  
Jennifer Anderson

Updated December 2021